

Bespoke Design

World Map BCU

Here at Concept Group we have a talented design team. Birmingham City University (BCU) commissioned Concept Group to design, create and install a visual representation of the variety of locations across the world where their students have originated and where they now work.

From the data provided, our designer Michael Starkey designed an innovative and sophisticated world map highlighting each location. The installation measures 1.5 x 6 metres and is mounted above the cafeteria in the main building at the university.

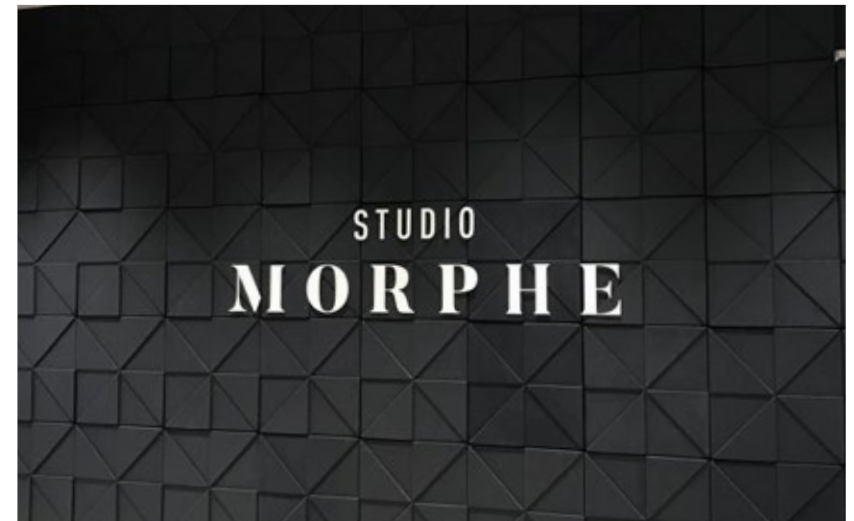
The 10mm circular holes identify the countries and are stencils backed with a light sheet acrylic diffuser. The internal white LED illumination shines through and creates a stark contrast against the black. The map itself is cut from brushed aluminium and the strips which were aligned between the holes.

The installation has now stood the test of time as this was first installed back in 2015 and remains a smart and sophisticated piece for the cafeteria.



Leeds
Experian Offices



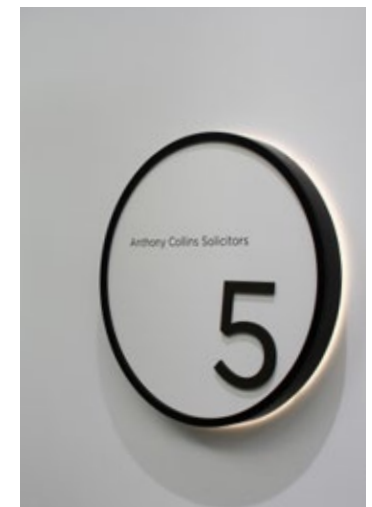
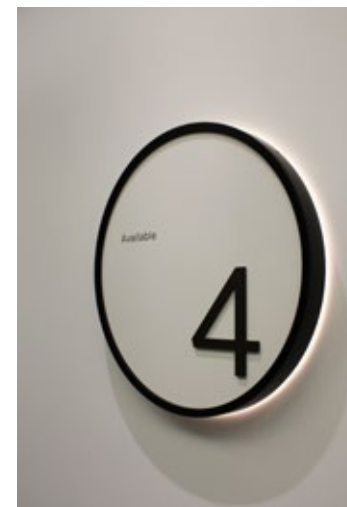
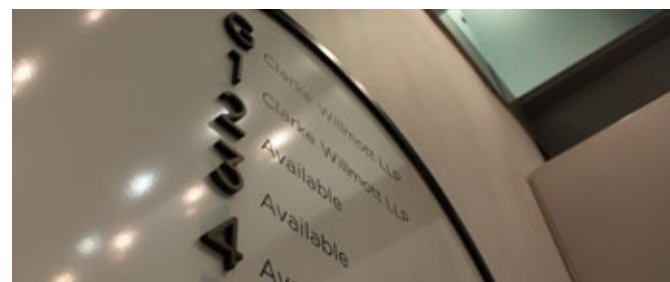
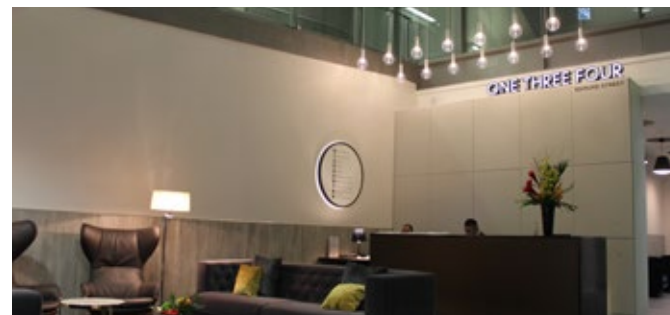
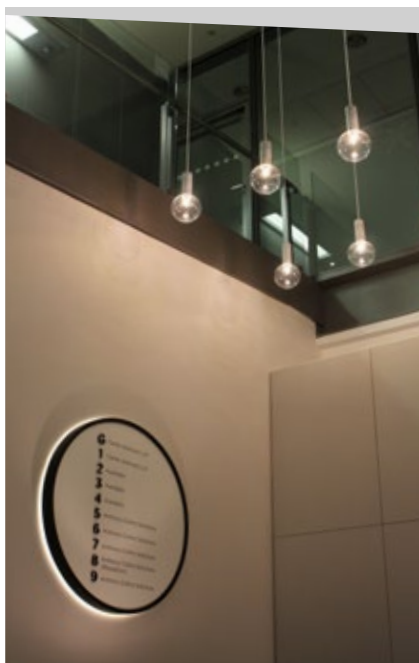
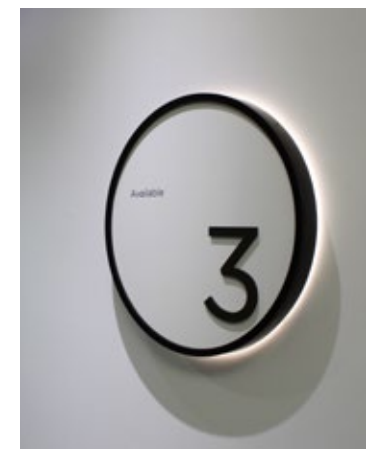


Birmingham

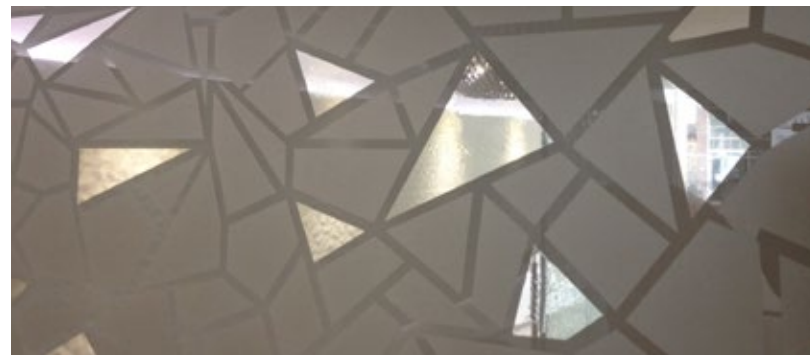
Morphe Cosmetics



134 Edmond Street, London
ONE THREE FOUR



Manchester
44 Peter Street



Birmingham

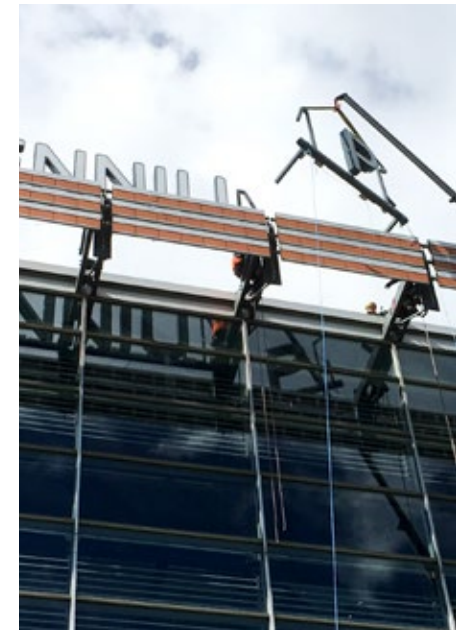
Millennium Point

Concept Group installed 15 individual letters to the roof of Millennium point in Birmingham, totaling 1.4m high and 15m wide. Each letter contains RGB LED modules allowing them to be illuminated with colours.

Concept Group produced engineering for the manufacture and installation of the signage. Substantial steel framing was required to support the lettering in its very exposed location. Due to the size of the letters, access was not available through the building and the letters were lifted to the roof area by crane 25m above ground level.

Major safety precautions were put in place to secure the work area and protect the public, with 24-hour security in place over the 3 day installation. The install was completed on schedule and the site was cleared without incident.

If you would like to discuss with us your requirements for corporate signage, call today on 0121 693 0005.





Birmingham
Radcliffe House

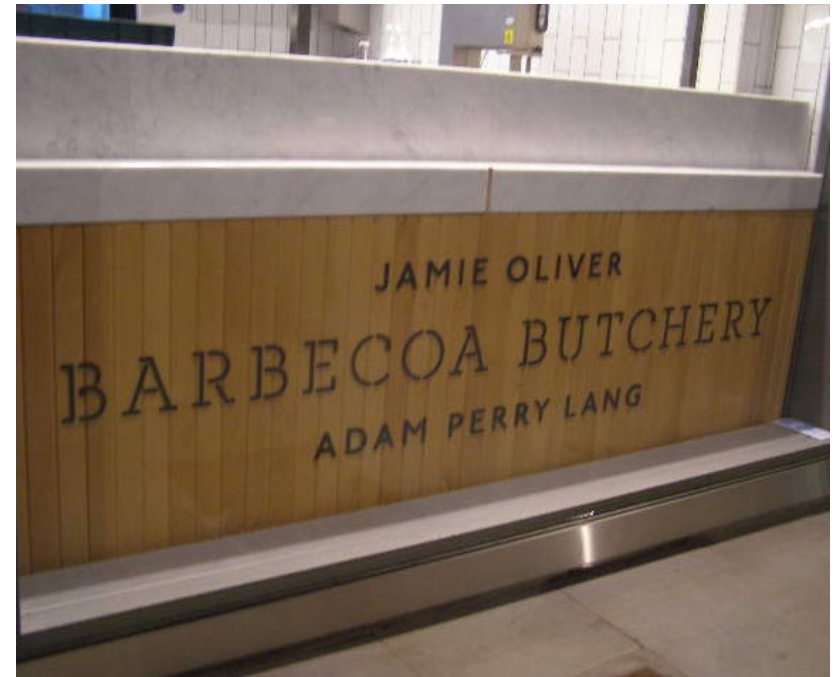
Belfast

NFU Mutual - Harvester House



London

Jamie's Italian



Sean Morrough

Managing Director

t: 0121 693 0005

m: 07778 266100

e: sean.morrough@concepts signs.co.uk

David Neale

Director

t: 0121 693 0005

m: 07717 861085

e: david.neale@concepts signs.co.uk



Head Office

22 Gas Street, Birmingham B1 2JT